

inj. 1.5ul Nepeta cataria 2nd leaf extract (/50ul CH2Cl  
2), DB-5. Note: From plant grown in our greenhouse; fil  
ter paper rubbing.

=====  
Injection Date : 5/28/2008 2:01:16 PM

Sample Name : Nepeta cataria

Vial : -

Acq. Operator : Aldrich

Inj : 1

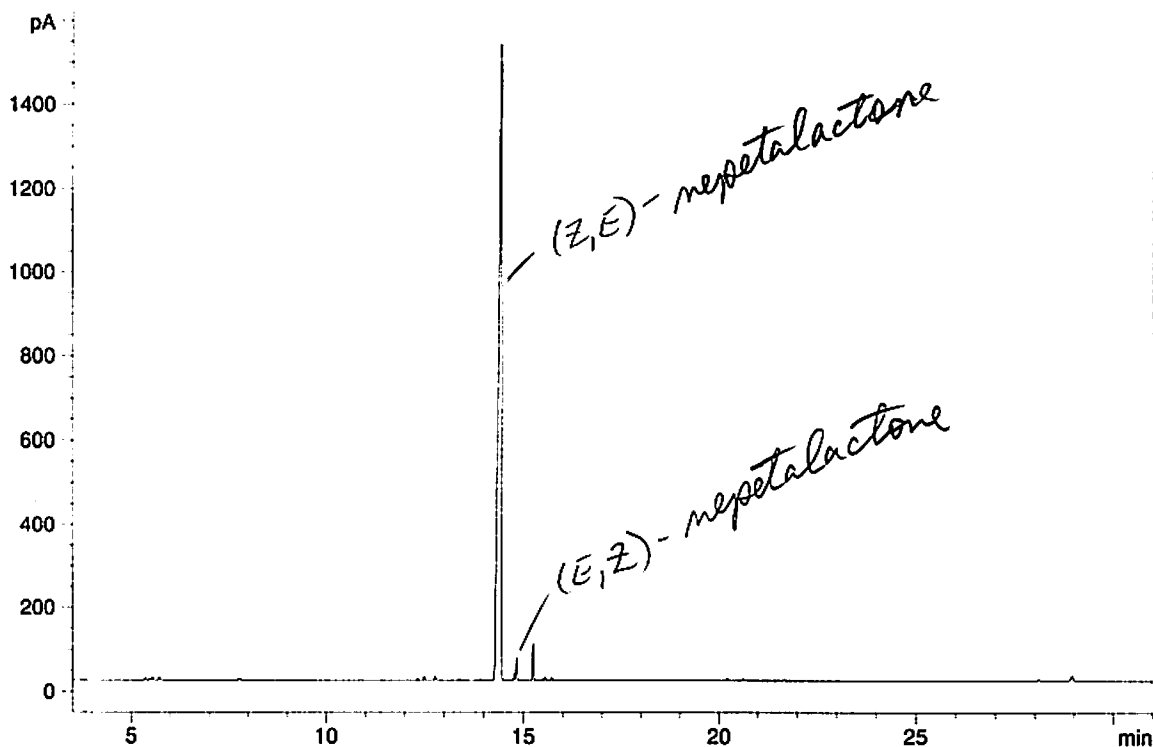
Inj Volume : Manually

Method : C:\HPCHEM\1\METHODS\DBLESS1.M

Last changed : 2/29/2008 10:02:00 AM by Aldrich

2/29/07; editing new method for desired output

FID1 A, (NEPETAJA-05282.D)



=====  
Area Percent Report  
=====

Sorted By : Signal  
Multiplier : 1.0000  
Dilution : 1.0000

Signal 1: FID1 A,

Peak #	RetTime [min]	Type	Width [min]	Area [pA*s]	Height [pA]	Area %
1	5.356	PB	0.0240	8.78574	5.68110	0.10085
2	5.470	PV	0.0243	6.94077	4.41408	0.07967
3	5.543	VB	0.0231	11.74346	7.55296	0.13480
4	5.716	PB	0.0248	12.14510	7.53389	0.13941
5	7.764	PP	0.0254	4.34185	2.61343	0.04984
6	12.329	PB	0.0298	5.45318	2.78975	0.06259
7	12.492	BB	0.0288	17.78157	9.52591	0.20410
8	12.770	BB	0.0273	18.38568	10.07146	0.21104
9	14.440	BB	0.0668	8208.72363	1524.32458	94.22245
10	14.768	BV	0.0282	29.38062	16.17481	0.33724
11	14.832	VB	0.0290	100.39045	53.29138	1.15231
12	15.251	BB	0.0298	163.45575	87.29059	1.87620
13	15.445	BV	0.0281	3.77907	2.08474	0.04338
14	15.494	VV	0.0269	3.75397	2.19825	0.04309
15	15.550	VP	0.0307	15.74674	8.10833	0.18075
16	15.724	BB	0.0303	13.53114	7.07726	0.15531

Peak #	RetTime [min]	Type	Width [min]	Area [pA*s]	Height [pA]	Area %
17	17.368	PB	0.0325	4.66588	2.22459	0.05356
18	20.209	BB	0.0288	9.97267	5.34009	0.11447
19	20.616	PB	0.0321	8.66736	4.19147	0.09949
20	20.691	BB	0.0318	3.88665	1.90400	0.04461
21	21.675	PB	0.0348	7.00172	3.16382	0.08037
22	28.941	BB	0.0701	53.53487	11.55540	0.61449

Totals : 8712.06786 1779.11192

Results obtained with enhanced integrator!

=====  
\*\*\* End of Report \*\*\*